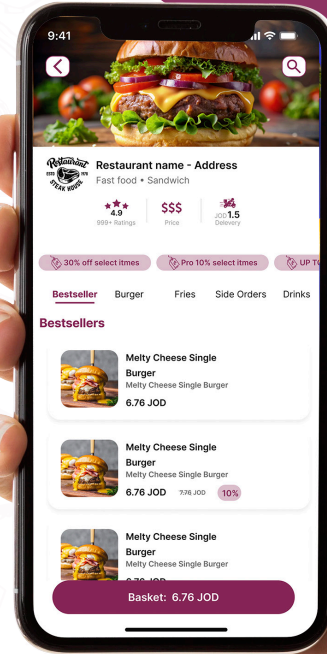




Overview

Jaml is a next-generation food delivery platform developed by Fast Journey Co. , a technology-driven company committed to redefining transportation and logistics solutions. Launched in 2025 under a pilot phase, Jaml addresses the growing demand for fast, reliable, and user-friendly food delivery in urban markets.

Built with scalability and efficiency in mind, Jaml bridges the gap between customers, restaurants, and delivery drivers through an intelligent, intuitive mobile application tailored to local preferences and behavior s. As part of Fast Journey’s wider innovation strategy, Jaml plays a crucial role in transforming how communities’ access and experience food services.



Vision

To become the region's leading food delivery platform by empowering local businesses, optimizing last-mile logistics, and delivering seamless, satisfying user experiences for every stakeholder.

Mission

To simplify and enhance food delivery for everyone customers, restaurants, and drivers through innovative technology, strategic partnerships, and a relentless commitment to convenience, transparency, and operational excellence.

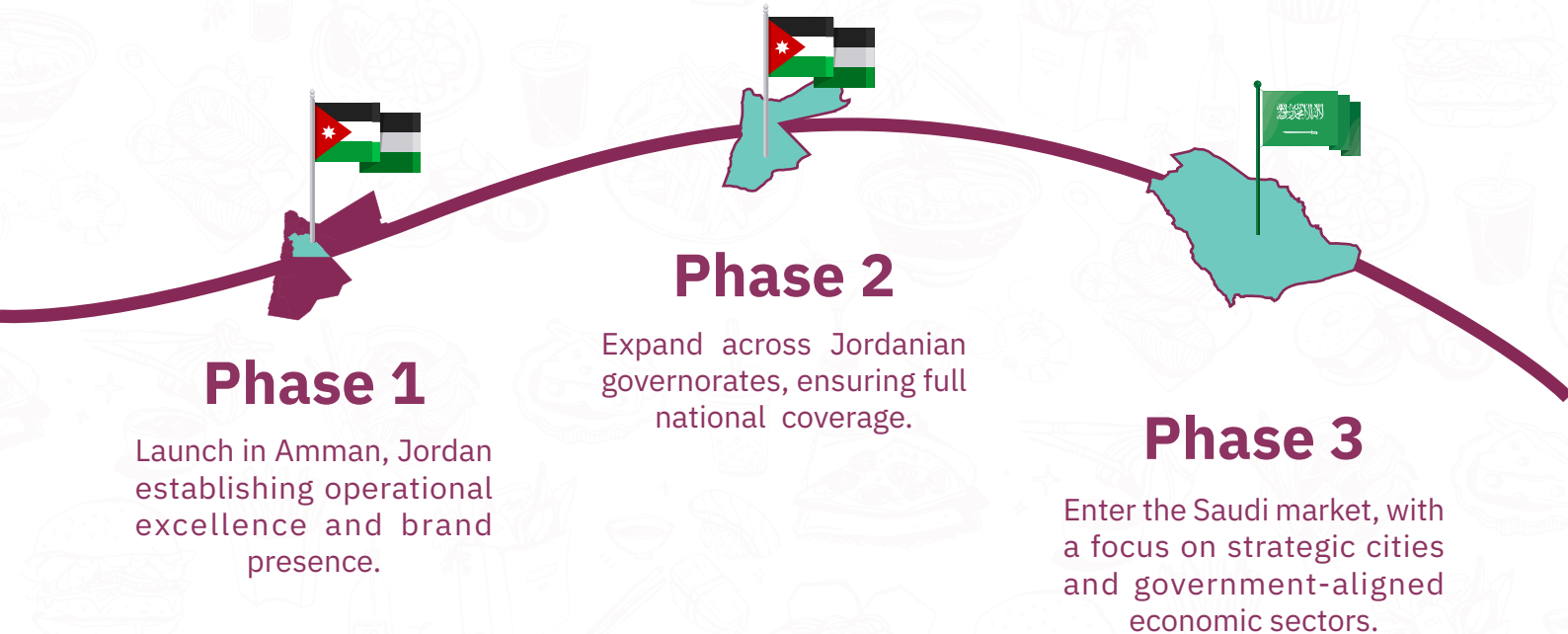


Target Market

- Urban residents seeking fast, reliable food delivery.
- Local restaurants aiming to digitize and expand their reach.
- Freelance or part-time drivers looking for flexible work opportunities.

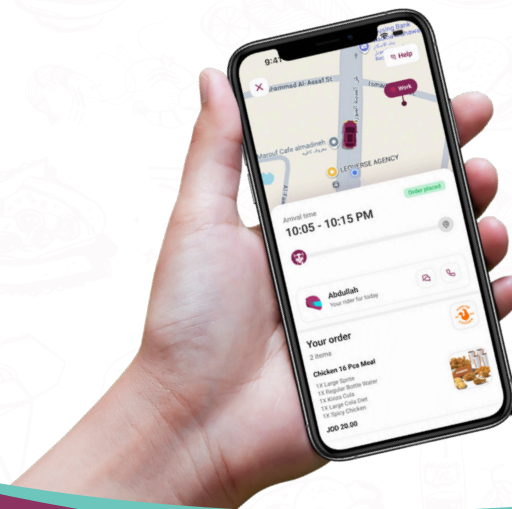


Market Launch & Expansion Plan



Core Features

- Real-Time Order Tracking – Live updates from order placement to doorstep delivery.
- Smart Basket & Item Customizations – Tailored ordering experience with ease.
- Multiple Payment Options – Supports cash, credit/debit cards, Apple Pay, and local gateways.
- Scheduled & Instant Deliveries – On-demand or pre-planned delivery scheduling.
- Order History & Easy Reorder – Quickly repeat past orders.
- Push Notifications – Stay informed with order status and exclusive deals.



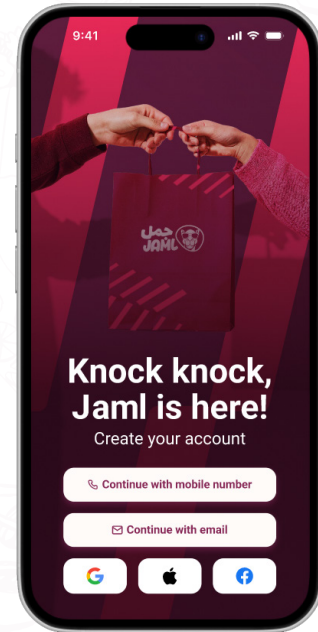
Value Proposition

- Exceptional user experience with a sleek and responsive UI.
- Affordable delivery fees, complemented by loyalty incentives.
- Quick and easy onboarding for restaurants and couriers.
- Tailored for the local market, from interface to operations.
- Reliable and secure technology infrastructure built for scale.



Competitive Edge

- Lightweight, high-performance app designed for speed and simplicity.
- Localized business development, focusing on partnerships with independent and small restaurants.
- Transparent operations, with real-time driver tracking, delivery ETAs, and clear pricing.
- Dedicated customer support with fast response and issue resolution.
- Flexible vertical expansion potential into grocery, pharmacy, and on-demand courier services.



Business Model

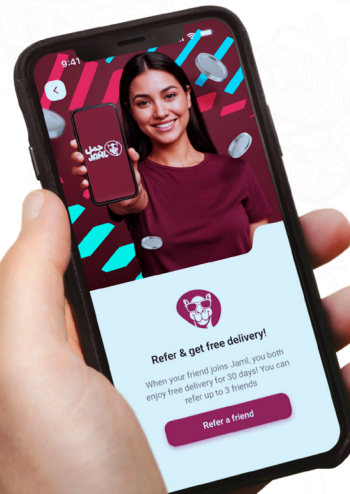
- Commission on restaurant sales.
- Delivery service fees charged to users.
- Premium subscriptions for restaurants (priority listing).
- In-app advertising and sponsored restaurant placements.



//// Social & Economic Impact

At Jaml, we aim to become the region's favorite food delivery platform not just by delivering meals fast, but by creating real, positive change in our communities.

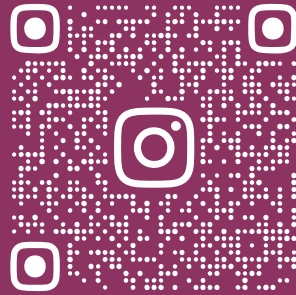
- We empower local small and medium-sized businesses with easy-to-use digital tools that help boost their food sales and reach more customers than ever before.
- We open doors to new flexible job opportunities for freelance drivers, giving people the freedom to earn on their own terms.
- We bring communities together by offering faster, more reliable service and increasing access to a wide variety of delicious cuisines, making every meal a shared experience that supports local growth and strengthens the economy.



Future Roadmap

- Loyalty and rewards program integration for returning users.
- AI-powered suggestions and predictive ordering.
- Expansion into new service categories (e.g., groceries, B2B logistics).
- Geographic growth beyond the initial pilot market, scaling across the region.





www.JAML.com

[f](#) [@](#) [in](#)
[@jamlappofficial](#)

